

# LED FLOOD LIGHT

Power: 100W



## Feature

- Ultra-slim sleek design, stylish and classic.
- Total 8 model of heat sink, full range from 30w to 200w, choose as you like.
- Reflector and heat sink integrated, pure aluminum structure for heat dissipation.
- Professional optical design, luminous efficiency is increased by 50%.
- Innovative G-buckle technology, prevent glass off, easy for assembling.
- 3/5 years warranty, life-time maintenance at cost price.
- Degree of protection: IP66.



## Product details



### A Design Innovative, High Efficient Production

Triangle buckle 304 stainless steel screws fixed lock more firmly, but also convenient for later maintenance.



### B Imported LED chip

Quality goods imported chip lamp bead, light efficiency is high, Low light failure, high energy saving efficiency.



3030 LED chip light efficiency can reach 130 lm/W.



### C Certification of the power supply

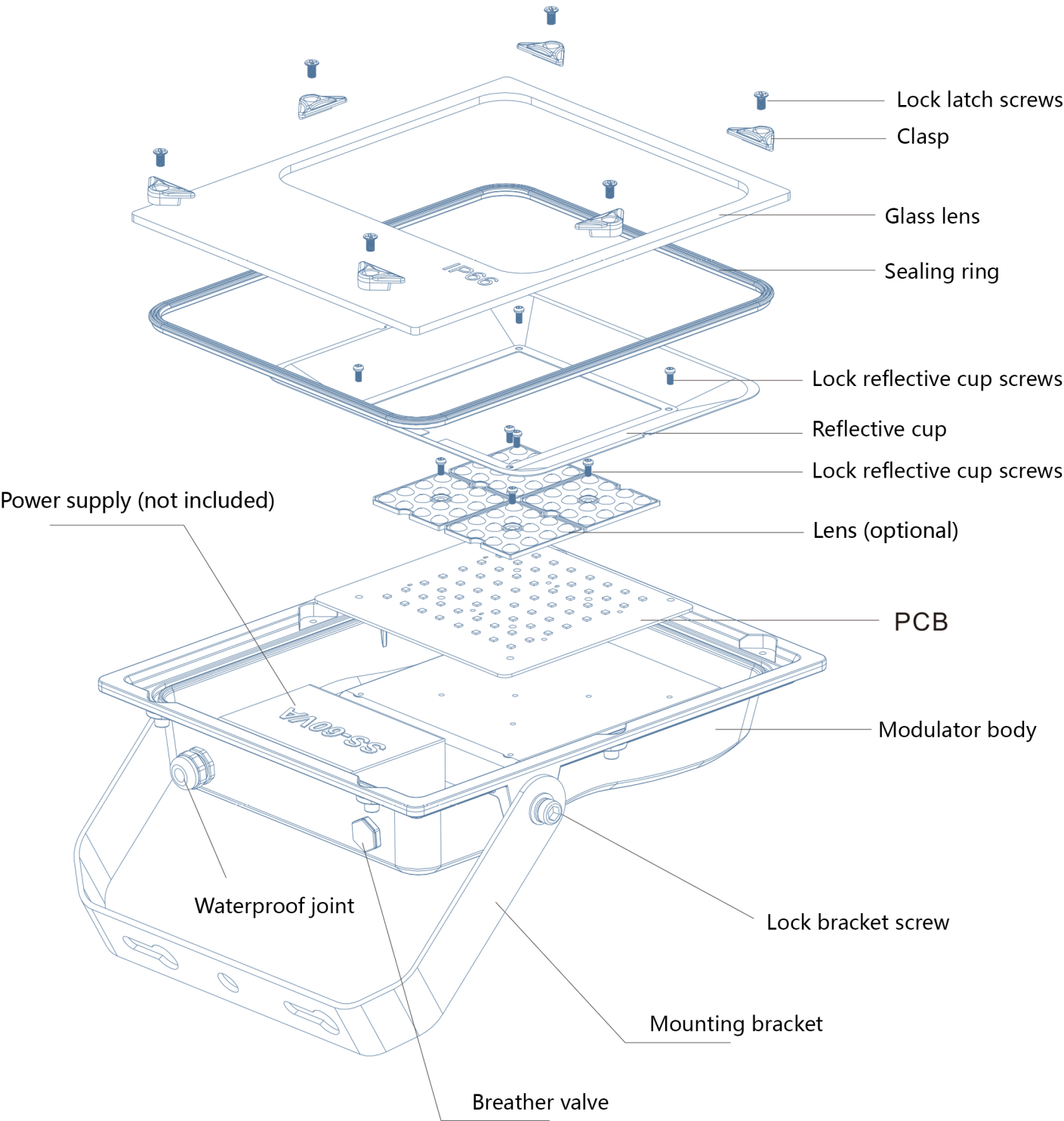
Brand Meanwell, CCC, CE, RoHS, such as safety requirements; Uniform thermal conductivity, good heat dissipation, waterproof, anti-corrosion.



### D Appearance Design

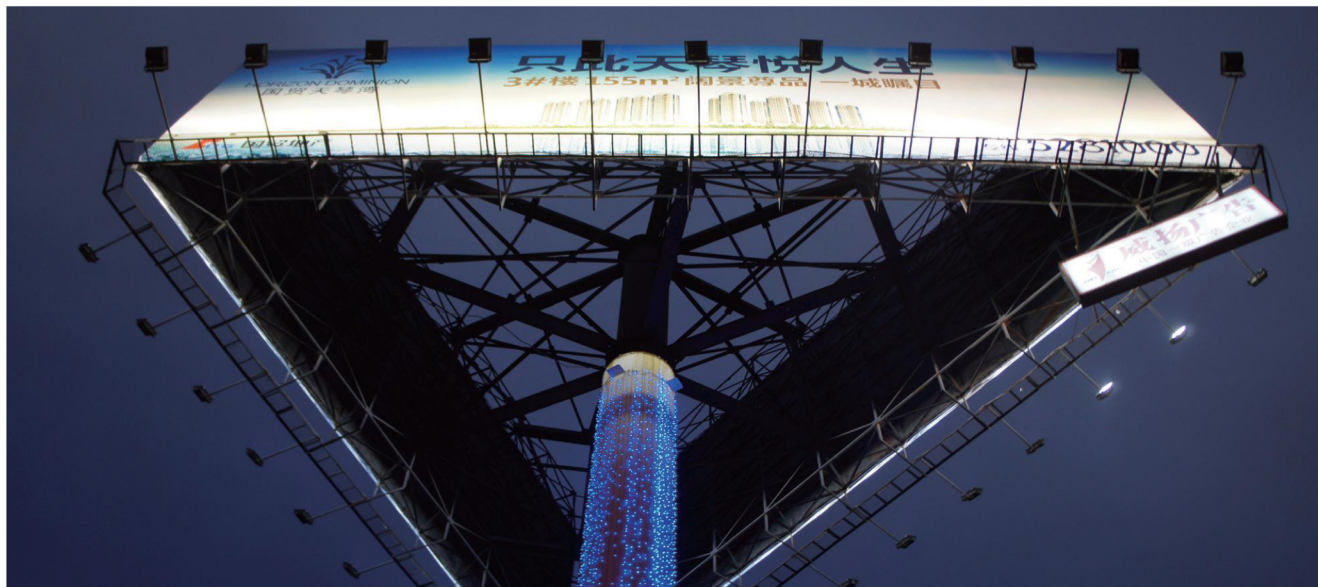
Thin streamlined design, fashion classic.

Explosive view



## Scene display

Widely used in shopping mall,exhibition hall,parking lot,playground,gymnasium,billboards,park,sculpture, national green lighting project,building facade and public corridor,stair corridor and other indoor and outdoor lighting.



Billboard application



The playground application



The gym application



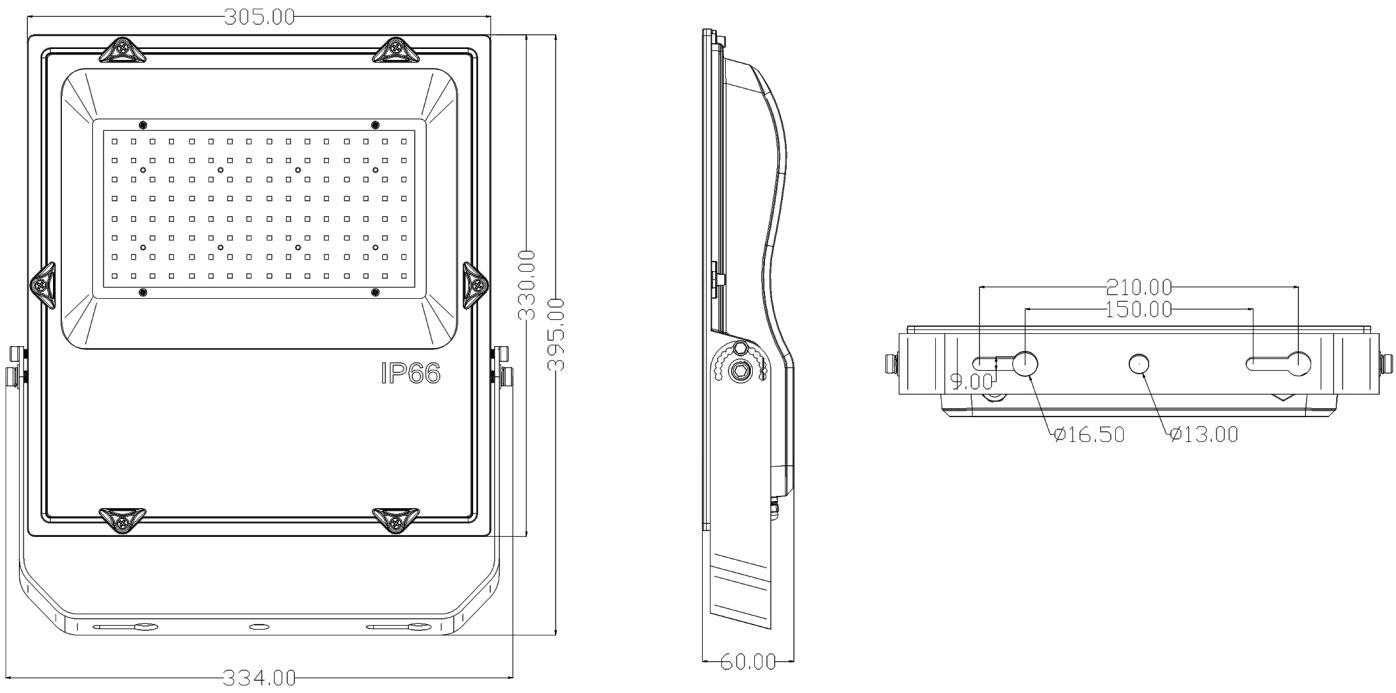
Building facade application



Specifications

Imput watt	100W	
Luminous Efficacy	130LM/W	
Imput voltage	AC85-265V	
Frequency (Hz)	50-60HZ	
Power factor	>0.98	
CCT	2700-6500K	
LED chip&Qty	Philips SMD3030 (128PCS)	
Beam Angle	30°/60°/90°/120°/70°140°	
Driver	DONE	Meanwell
CRI	>70	
Product size	395*334*60mm	
N.W.	3.4kg	
Environment temperature	-20℃-+45℃	
Certificates	CE、 ROHS、	
Lifespan	50000H	
Warranty	3/5 years	

Product size



Package size

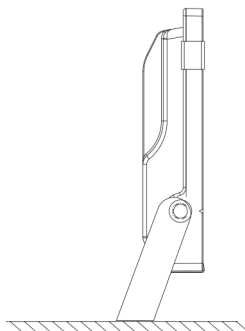
Power	Size	Net Weight	Carton size	Quantity
100W	395*334*60mm	3.4kg	490*400*150mm	1Pcs/4.5kg

The following is a neutral cowhide carton packing, such as the need to print LOGO, can be customized.

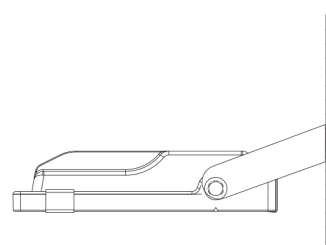


## Installation

1. Safety is first.
2. This series of flood lights can be installed with many ways, such as sitting installed, Wall-mounted installation and so on.
3. The installation shall be completed by experienced electrician.
4. Any further questions, feel free to get us for more solutions.



sitting installed



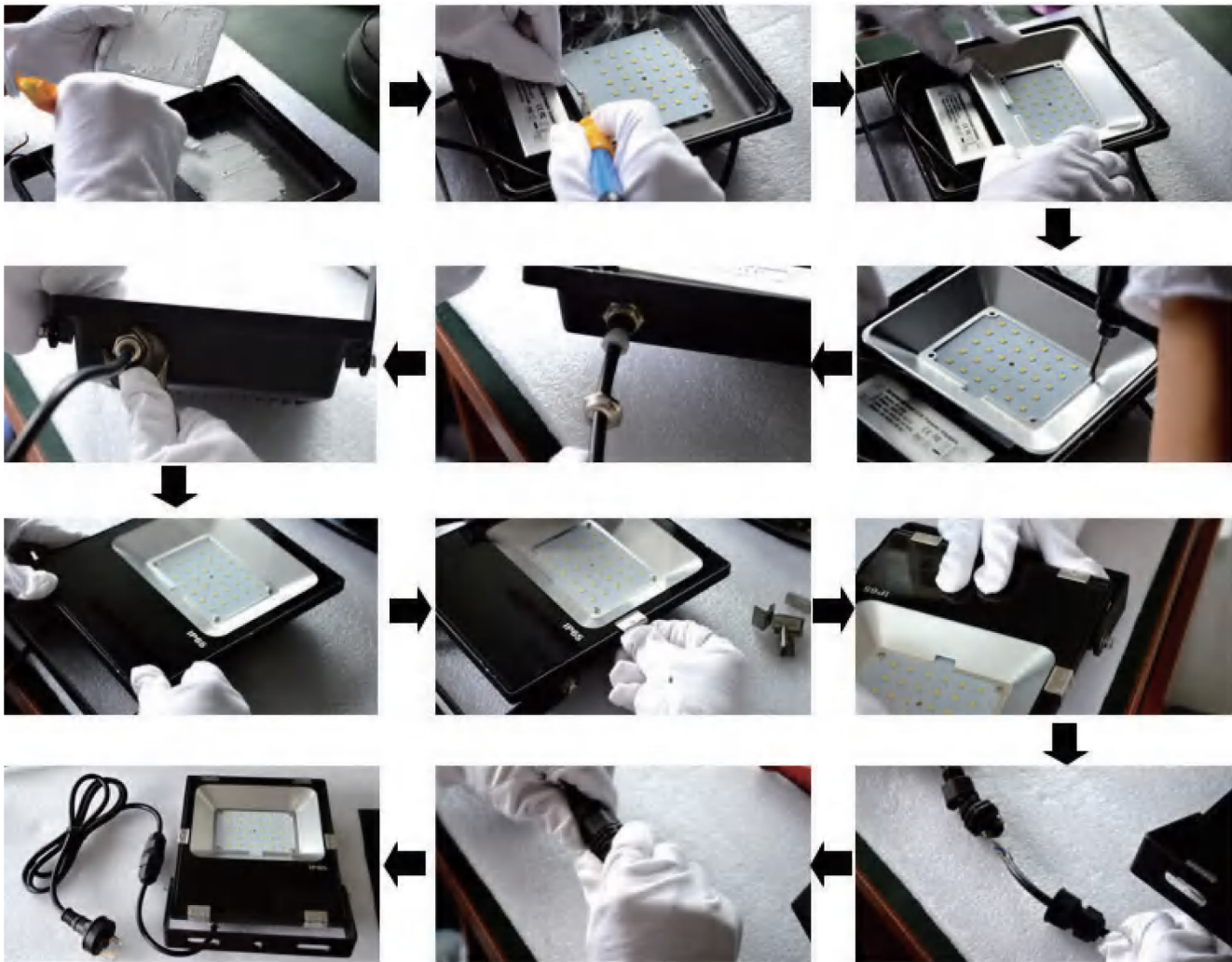
Wall-mounted installed

## Cautions



- Lightning Protection: Meanwell driver can resist 6KV surge, if the using environment out of this range, please add higher grade surge terminal.
- Degree of Protection: IP65, can be applied outdoor, but immersed in water. The tempered glass shall not be knocked by any pointed thing.
- Don't take apart the product or replace mechanical and electronic components.
- Don't stare at the strong light for a long time as it may cause injury to eyes.
- No specific requirements, the wires shall be 3\*0.75 without plug, if yes, keep it informed by the sales.
- This series of lights are not compatible with ballast, when replacing the tradtional lamps,please remove the ballast or contact us for more solutions.

## Production process



## Aging test



Test report

IES test

