

HBC

Led High Bay Light



200W LED HIGH BAY LIGHT (Product specification)

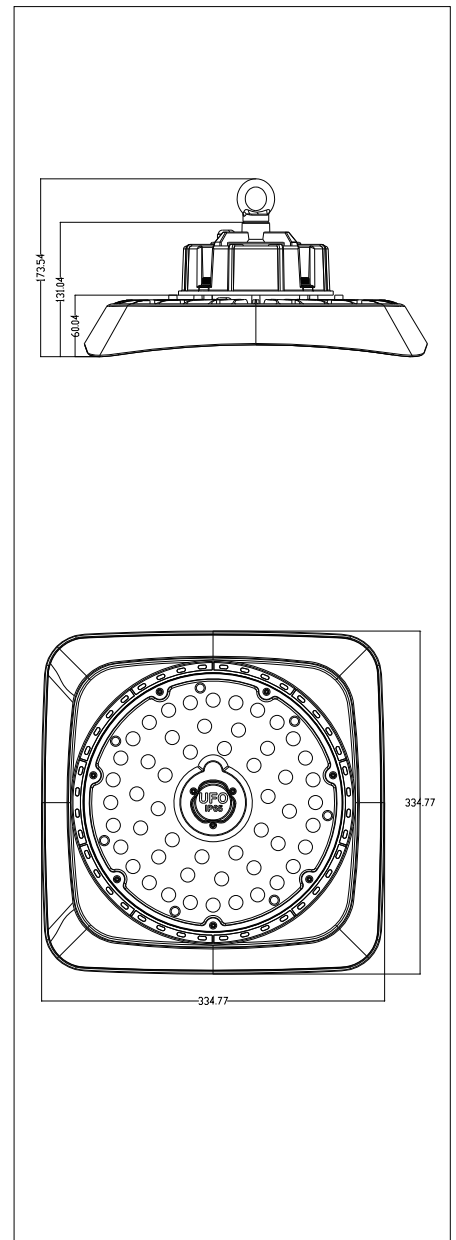


Brand	
Product name	200W LED high Bay light
Product number	
Date	2019.11.8



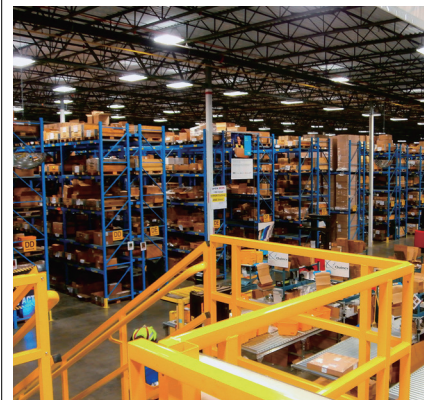
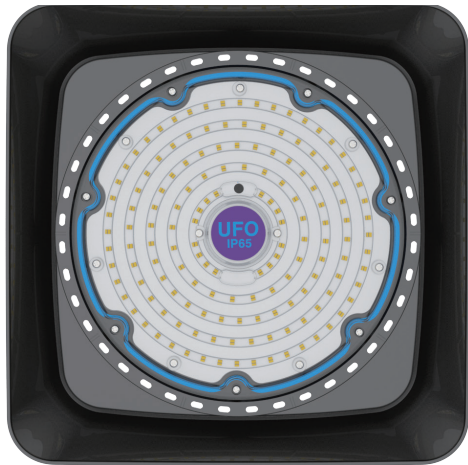
HBC

Led High Bay Light



HBC

Led High Bay Light



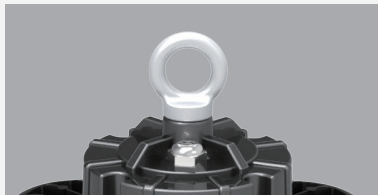


Technical Parameters

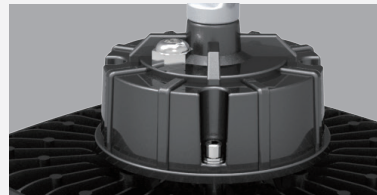
Product Number	SED-HBC-200W		
Input Power	200W		
Lamp Brand	Philips SMD3030 175PCS		
Light Effect	130lm/W		
Input Voltage	AC185-265V	Frequency	50-60Hz
Power Factor	PF≥0.98	CCT	2700-6500K
Power Supply	Meanwell	CRI	≥80
Product Size	Φ335*175mm	Package size	430*430*170mm
Net Weight	4.3KG	Gross weight	5.3KG
Lamp Body Color	black		
Power Cable	Brown L firewire		
	Yellow green G ground		
	Blue N zero line		
Beam Angle	60°、 90°、 120°		
Protection Level	Protection class IP65 resistant to 17 winds	Material	ADC12 die-casting aluminum
Service Life	50000 hours	Temperature	-30 +65
Certificate	CE RoHS	Warranty	5 years

HBC

Led High Bay Light



304 stainless steel hook



Meanwell driver



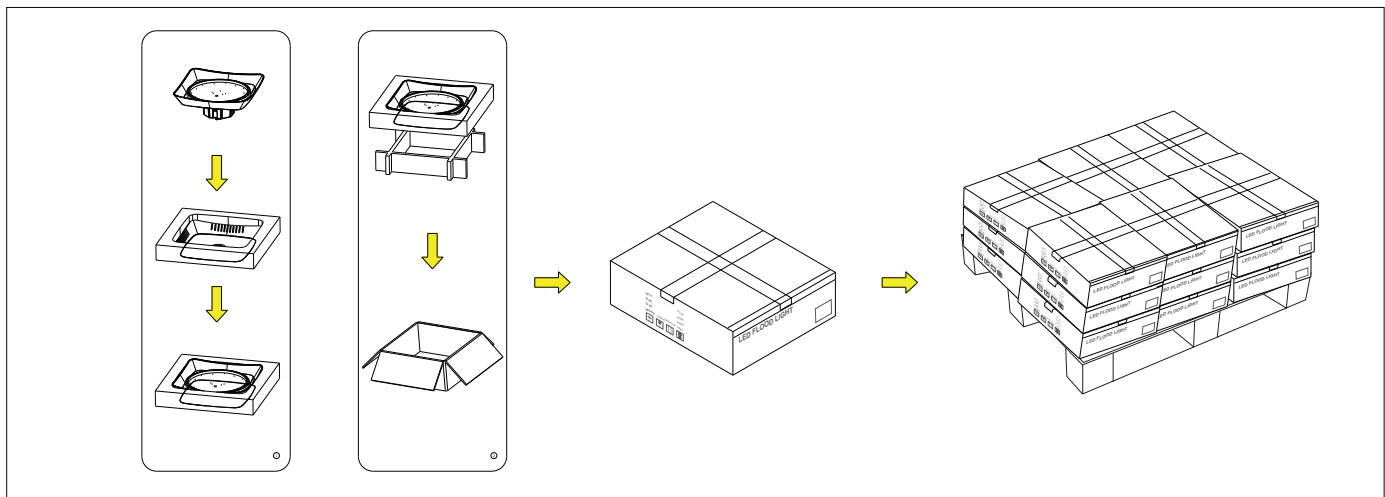
Philips lamp bead



ADC12 die-casting aluminum

Design Features

Product packaging



HBC

Led High Bay Light



★Instructions for use

1. This product uses working voltage: AC85-265V 50/60 Hz, please do not exceed the working voltage range;
2. Since the lamp has a PC lens accessory, please take care when handling and storing it, and do not press it.

★Installation instructions

1. The mounting rod or mounting surface can be directly screwed through the mounting hole on the product mounting bracket;
2. After fixing the product, you can loosen the screws on both sides of the bracket and then change the angle of the bracket, which is equivalent to adjusting the installation angle of the fixture;
3. Working environment temperature -30 °C~+65 °C storage;
4. When installing the luminaire, the wiring and wiring are closed to prevent leakage;
5. When the external power cord is connected, the corresponding waterproof and water leakage measures must be taken;
6. Anti-glare design, uniform light distribution;
7. Independent power supply box design is beneficial to heat dissipation of the lamp body, reducing light decay and prolonging the service life of the light source;
8. Support light sensor installation, which can realize intelligent control of lamps and improve energy saving benefits.

★Maintenance and repair instructions

1. Make sure that the power has been turned off before maintenance.
2. Regularly clean the PC lens of the floodlight to maintain the high transmittance of the lamp;
3. Regularly clean the dust of the floodlight casing and radiator to maintain good heat dissipation performance;

★QUALITY ASSURANCE, AFTER-SALES SERVICE

The whole lamp is guaranteed for 5 years. Under normal conditions of use, quality assurance is based on the proper storage, installation, use and maintenance of the product; Due to improper installation and use, product damage caused by violation of product operating procedures is not covered by warranty; For quality problems during the quality warranty period, the company will choose to repair, exchange (parts) or replace new products during the warranty period. The method is solved; if the quality warranty period is exceeded, the materials and labor costs will be properly collected.